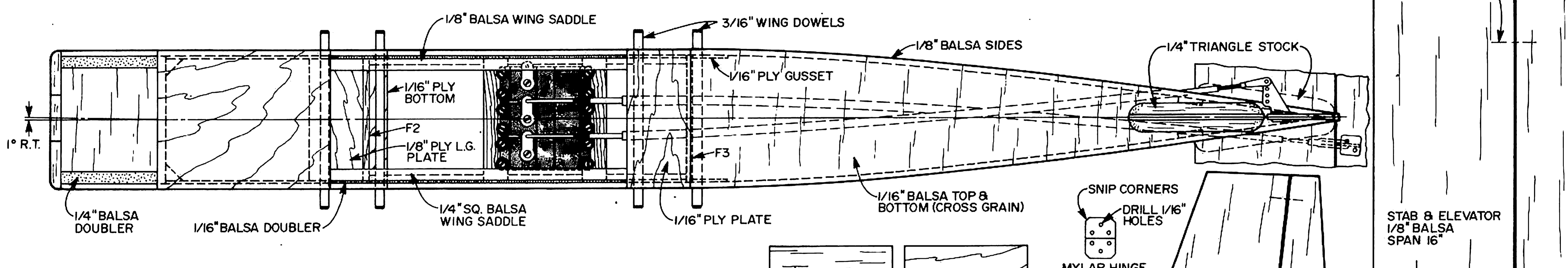


TIPS MADE FROM 1" BALSA TRIANGLE STOCK

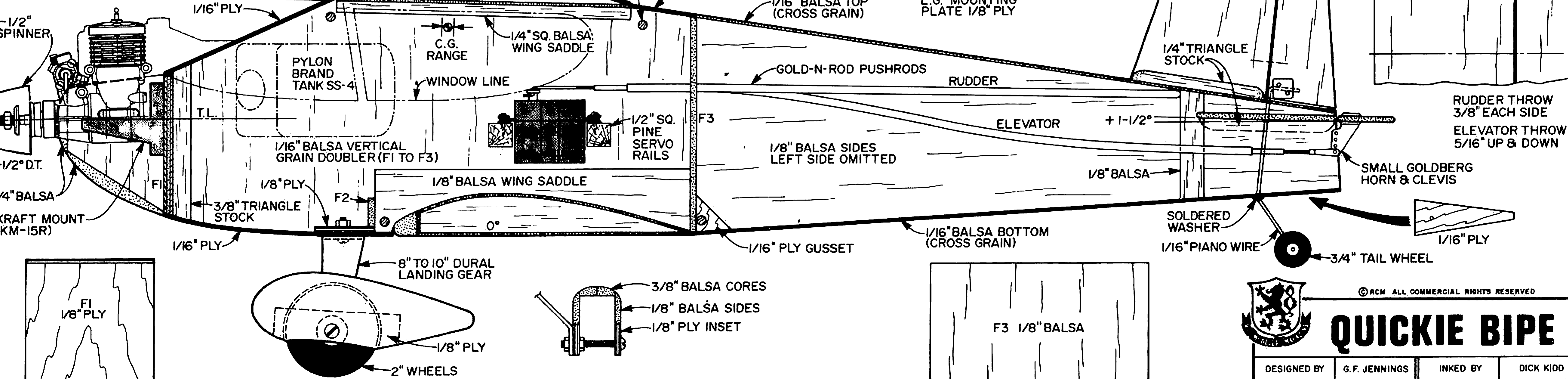
TOP WING SPAN - 38" RIB SPACING - SOLID LINES DIHEDRAL EACH TIP 1-1/4"

LOWER WING SPAN - 34" RIB SPACING - DOTTED LINES DIHEDRAL EACH TIP 1"

WRAP CENTER SECTION WITH CLOTH OR CELASTIC 4" WIDE ON BOTH WINGS



**SUPER TIGRE G15 R/C**



© RCM ALL COMMERCIAL RIGHTS RESERVED

**QUICKIE BIPE**

DESIGNED BY G.F. JENNINGS INKED BY DICK KIDD

PLAN 615

0 1 2 3 4 5 6